


Made in Italy

 Strip LED RGBW, code: BASSTMUL200075  
Linear profiles for indoor applications



21/11/2024 Rev. 26



## DESCRIPTION

linear profile for indoor applications; recessed, surface mounted (ceiling, wall, floor); Power consumption: 20W; Power supply: 24Vdc; Delivered lumen output: 800 lm/m; 120 RGBW LEDs groups; LED colour: RGBW; power supply unit not included; Ingress protection: IP20; W: 2700K; Dimensions: 5000 mm; Energy efficiency class: F (light source) in accordance with EU 2019/2015; Accessories: WDA05 Profile - Corner, WDA05N Profile - Corner, WDA05Z Profile - Corner, WDA06 Profile - Corner, WDA07 Profile - Line Plus, WDA08 Profile - Line Plus, WDA09 Profile - Plaster Plus, WDA10 Profile - Plaster Plus, WDA12 Profile - Lyna, WDA13 Profile - Lyna, WEA05 End cap - Corner, WEA06 End cap with hole - Corner, WEA07 End cap - Line Plus, WEA08 End cap with hole - Line Plus, WEA09 End cap with hole - Plaster Plus, WEA10 End cap - Lyna, WR0000S1M Cover - Line / Line Plus / Plaster / Plaster Plus / Corner, WR0000S1S Cover - Line / Line Plus / Plaster / Plaster Plus / Corner, WR0000S1T Cover - Line / Line Plus / Plaster / Plaster Plus / Corner, WR0000S2M Cover - Line / Line Plus / Plaster / Plaster Plus / Corner, WR0000S2S Cover - Line / Line Plus / Plaster / Plaster Plus / Corner, WR0000S2T Cover - Line / Line Plus / Plaster / Plaster Plus / Corner, WR0000S3S Cover - Lyna, WR0000S4M Cover - Lyna, WR0000S4S Cover - Lyna, WR0000S5M Cover - Lyna; tested and approved via E.O.L. (End Of Line) test with functioning test and check of electrical power consumption

Status: Product being discontinued

#### ELECTRICAL CHARACTERISTICS

Power consumption	20W
Power supply	24Vdc
Power supply unit	power supply unit not included

#### LIGHTING CHARACTERISTICS

Number and type of LED	120 RGBW LEDs groups
LED colour	RGBW
Delivered lumen output	800 lm/m

#### MECHANICAL CHARACTERISTICS

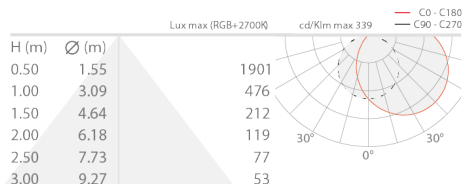
Dimensions	5000 mm
------------	---------

#### GENERAL CHARACTERISTICS

Ingress protection	IP20
Energy efficiency class	F (light source) in accordance with EU 2019/2015
Walkover	no
Drive-over	no
Notes	W: 2700K

PHOTOMETRIC DATA

RGBW - 100cm FROST



ACCESSORIES

Optical Accessories



WR0000S1M

Cover - Line / Line Plus / Plaster / Plaster Plus / Corner milky - 2000 mm



WR0000S1S

Cover - Line / Line Plus / Plaster / Plaster Plus / Corner frosted - 2000 mm



WR0000S1T

Cover - Line / Line Plus / Plaster / Plaster Plus / Corner transparent - 2000 mm



WR0000S2M

Cover - Line / Line Plus / Plaster / Plaster Plus / Corner milky - 3000 mm



WR0000S2S

Cover - Line / Line Plus / Plaster / Plaster Plus / Corner frosted - 3000 mm



WR0000S2T

Cover - Line / Line Plus / Plaster / Plaster Plus / Corner transparent - 3000 mm



WR0000S3S



WR0000S4M

Cover - Lyna  
frosted - 2000 mm

Cover - Lyna  
milky - 1000 mm

WR0000S4S  
Cover - Lyna  
frosted - 1000 mm



WR0000S5M  
Cover - Lyna  
milky - 2000 mm

### Other



WDA05  
Profile - Corner  
aluminium - 2000 mm

WDA05N  
Profile - Corner  
aluminium - 2000 mm - black



WDA05Z  
Profile - Corner  
aluminium - 2000 mm - bronze

WDA06  
Profile - Corner  
aluminium - 3000 mm



WDA07  
Profile - Line Plus  
aluminium - 2000 mm

WDA08  
Profile - Line Plus  
aluminium - 3000 mm

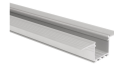


WDA09  
Profile - Plaster Plus  
aluminium - 2000 mm

WDA10  
Profile - Plaster Plus  
aluminium - 3000 mm



**WDA12**  
Profile - Lyna  
aluminium - 1000 mm



**WDA13**  
Profile - Lyna  
aluminium - 2000 mm



**WEA05**  
End cap - Corner  
grey - 1 piece



**WEA06**  
End cap with hole - Corner  
grey - 1 piece



**WEA07**  
End cap - Line Plus  
grey - 1 piece



**WEA08**  
End cap with hole - Line Plus  
grey - 1 piece



**WEA09**  
End cap with hole - Plaster Plus  
grey - 1 piece



**WEA10**  
End cap - Lyna  
grey - 1 piece

L&L Luce&Light SRL reserves the right to change the information contained in this document at any time without prior notice being given.